

**ONE TWO ACADEMY FLASH TEST
BIOLOGY**

SSLC

Mark:- 50

**Answer the following in one word
or in an sentence :- (15)**

- Bipolar neurons are found in
(a) retina of eye (b) cerebral cortex
(c) embryo (d) respiratory epithelium
- Site for processing of vision, hearing, memory, speech, intelligence and thought is
(a) kidney (b) ear
(c) brain (d) lungs
- In reflex action, the reflex arc is formed by
(a) brain, spinal cord, muscle
(b) receptor, muscle, spinal cord
(c) muscle, receptor, brain
(d) receptor, spinal cord, muscle
- Dendrites transmit impulse _____ cell body and axon transmit impulse _____ cell body.
(a) away from, away from
(b) towards, away from
(c) towards,towards
(d) away from, towards
- The outer most of the three cranial meninges is
(a) arachnoid membrane (b) piamater
(c) duramater (d) myelin sheath
- There are _____ pairs of cranial nerves and _____ pairs of spinal nerves.
(a) 12, 31 (b) 31, 12 (c) 12, 13 (d) 12, 21
- The neurons which carries impulse from the central nervous system to the muscle fibre.
(a) afferent neurons (b) association neuron
(c) efferent neuron (d) unipolar neuron
- Which nervous band connects the two cerebral hemispheres of brain?
(a) thalamus (b) hypothalamus
(c) corpus callosum (d) pons
- Node of Ranvier is found in
(a) muscles (b) axons
(c) dendrites (d) cyton

- Vomiting centre is located in
(a) medulla oblongata (b) stomach
(c) cerebrum (d) hypothalamus
- Nerve cells do not possess
(a) neurilemma (b) sarcolemma
(c) axon (d) dendrites
- A person who met with an accident lost control of body temperature, water balance, and hunger. Which of the following part of brain is supposed to be damaged?
(a) Medulla oblongata (b) cerebrum
(c) pons (d) hypothalamus

Assertion: Cerebrospinal fluid is present throughout the central nervous system.

Reason: Cerebrospinal fluid has no such functions.

Assertion: Corpus callosum is present in space between the duramater and piamater.

Reason: It serves to maintain the constant intracranial pressure.

Match the following

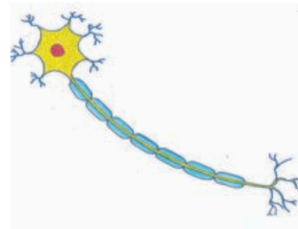
Column I	Column II
A. Nissil's granules	Forebrain
B. Hypothalamus	Peripheral Nervous system
C. Cerebellum	Cyton
D. Schwann cell	Hindbrain

Answer the following in brief- (20)

ONE TWO ACADEMY

1. Define stimulus.
2. Name the parts of the hind brain.
3. What are the structures involved in the protection of brain?
4. Give an example for conditioned reflexes.
5. Which acts as a link between the nervous system and endocrine system?
6. Define reflex arc.

- 7) *Copy the diagram and label any two parts in the group given:*
(cyton, axon, dendron, terminal branches)



- 8) *The diagram is of the human brain.*

Shade the areas marked A and B in the parts of the brain, corresponding with the function.

- A. Seat of smell
B. Seat of vision



Differentiate between

- 9) Voluntary and involuntary actions.
- 10) Medullated and non-medullated nerve fibre.

Answer in detail:- (15)

- 1) Describe the structure of spinal cord.
- 2) How nerve impulses are transferred from one neuron to next neuron?
- 3) Classify neurons based on its structure.